

A. FRAME SPECIFICATIONS

Item	Description
Upper Headset Bearing	1-1/8", 41 x 30.2 x 6.5, 36° x 45°
Lower Headset Bearing	1-3/8", 48.9 x 37 x 6.5, 36° x 45°
Rear Derailleur Hanger	Cervélo Derailleur Hanger V2 Standard Mount (for UDH frames) Cervélo Derailleur Hanger V2 for Shimano Direct Mount (for UDH frames)
Rear Thru-Axle Dimensions	169 mm length, M12 x 1, for UDH derailleur hanger, 142 x 12 spacing, 13 mm thread length
Front Thru-Axle Dimensions	122 mm length, M12 x 1.5, for 100 x 12 spacing, 9.5 mm thread length
Maximum Chainring Size 1x	68t with 3 mm clearance (45.0 mm chainline)
Maximum Chainring Size 2x	54/40t with 3 mm clearance (44.5mm chainline) 56/43t with 3 mm clearance (45.0mm chainline)
Maximum Tire Width (Actual)	34 mm (4mm clearance)*
Front Brake Mount Type	Flat mount disc (requires use of Cervélo Front Brake Mounting Plate 004 with all brands of calipers)

*Tire measurements shall be taken at the widest point of the tire when it is installed on the rim and inflated. 4 mm of distance is required between the tire and any frame or fork element.

A. FRAME SPECIFICATIONS (CONT.)

Item	Description
Rear Brake Mount Type	Flat mount disc
Rear Brake - Chainstay Height	25 mm
Brake Rotor Min/Max	Front 160 mm only, Rear 140 mm / 160 mm
Bottom Bracket Type/Width	BBright
Fork Offset Size 48 cm	58.5 mm
Fork Offset Size 51 cm	52.5 mm
Fork Offset Size 54-61 cm	46.5 mm
Fork Steerer Type	FK170 Tension rod system
Maximum Stem Spacer Height	30 mm

B. PART NUMBERS

Item	Part No.	Description	Qty.	Consumable
A1	See Table C	S5F Fork Tension Rod Kit with Tension Rod, Bumper, Preload Cone and S5 Fork Fixing Screw - frame size specific	1	
A2	HS-581	Tension Rod Bumper	1	X
A3	FKI-GPSP	S5F Fork Gap Spacer Kit	1	
B1	HS-054	Upper Headset Bearing FSA 1-1/8" 36° x 45°	1	X
B2	HS-054SL	Upper Headset Bearing FSA Super Light (SL) 1-1/8" 36° x 45°	1	X
B3	HS-031	Lower Headset Bearing FSA 1-3/8" 36° x 45°	1	X
B4	HS-031SL	Lower Headset Bearing FSA Super Light (SL) 1-3/8" 36° x 45°	1	X
C	BRP-3004	Front Brake Mounting Plate 004	1	
D1	QRA-882	Cervélo Front Aero Thru-Axle V2 with Removable Handle	1	
D2	QRA-AERO2-HNDL	Removable Handle For Cervélo Aero Thru-Axle	1	
D3	QRA-698	Cervélo Road UDH Rear Aero Thru-Axle with Removable Handle	1	
E	N/A	5 mm Blanking Plug	2	
F	GR-BB-140	Bottom Bracket Blanking Plug	1	
G	BTM-705	Down Tube Internal Battery Mount Assembly	1	
H	EW-GM300-S	Shimano SD300 Grommet for 6 mm Hole	2	
I	GR-576	6 mm Blanking Plug	2	
J1	FDM-907	Front Derailleur Mount 907 with Fixing Screws	1	

Item	Part No.	Description	Qty.	Consumable
J2	SS-FDM-192	Set Screw Blanking FDM	2	
K	PRO-CS-508	Chainstay Protector	1	X
L1	DRH-897	Cervélo Derailleur Hanger V2 for Shimano Direct Mount	1	X
L2	DRH-896	Cervélo Derailleur Hanger V2 Standard Mount	1	X
M1	SPCC-991	S5 Seatpost Clamp Cover	1	X
M2	SPC-0E0S5	S5 Seatpost Clamp Assembly	1	

C. S5 FORK TENSION ROD KIT

Part No.	Description
HS-TR48	S5F Fork Tension Rod Kit with Tension Rod, Bumper, Preload Cone and S5 Fork Fixing Screw for 48 cm frame
HS-TR51	S5F Fork Tension Rod Kit with Tension Rod, Bumper, Preload Cone and S5 Fork Fixing Screw for 51 cm frame
HS-TR54	S5F Fork Tension Rod Kit with Tension Rod, Bumper, Preload Cone and S5 Fork Fixing Screw for 54 cm frame
HS-TR56	S5F Fork Tension Rod Kit with Tension Rod, Bumper, Preload Cone and S5 Fork Fixing Screw for 56 cm frame
HS-TR58	S5F Fork Tension Rod Kit with Tension Rod, Bumper, Preload Cone and S5 Fork Fixing Screw for 58 cm frame
HS-TR61	S5F Fork Tension Rod Kit with Tension Rod, Bumper, Preload Cone and S5 Fork Fixing Screw for 61 cm frame



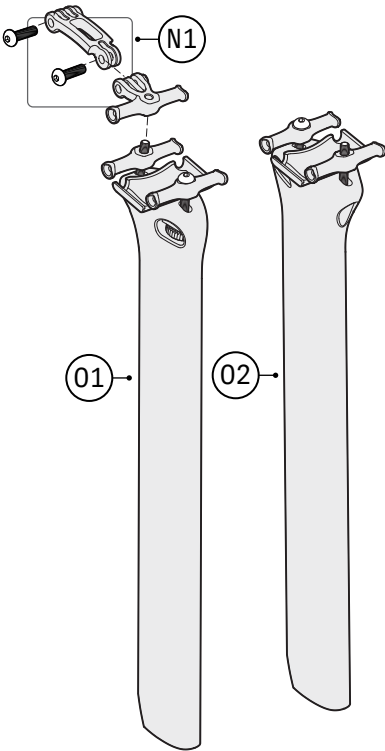
Frame Code: FM170
Serial Number Code: SN170
Frame Sizes (cm): 48/51/54/56/58/61

Build Compatibility:
Shimano Di2 12 speed-1x and 2x
SRAM eTap-1x and 2x

2026

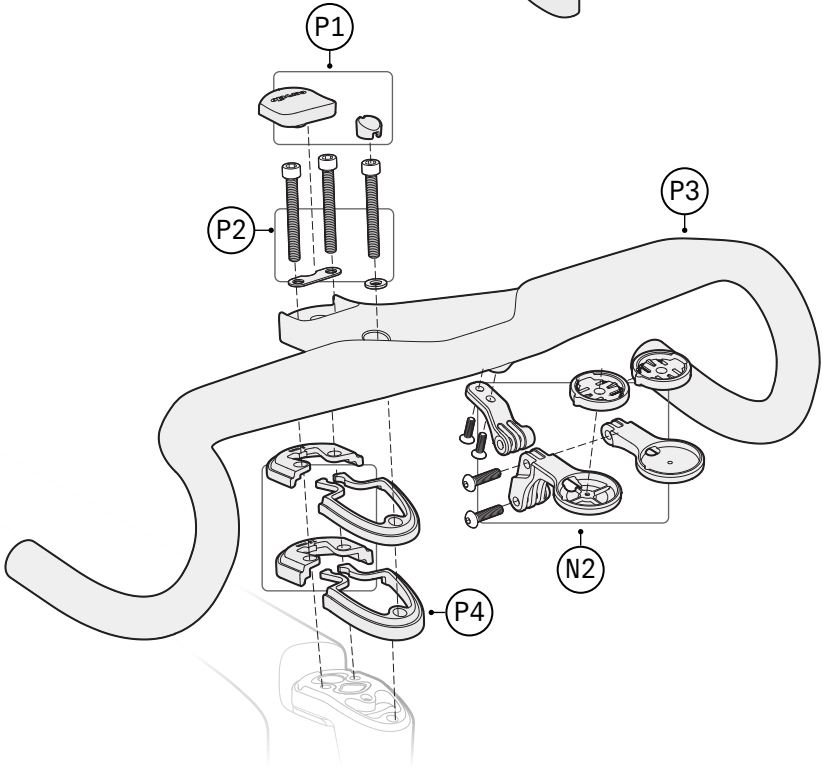
D. PART NUMBERS - SEATPOSTS,ONE PIECE HANDLEBAR AND STEM

Item	Part No.	Description	Qty.	Consumable
N1	MT-LM-R-974	Accessory Mount Kit Rear 974 (for SP34)	1	
N2	MT-LM-F-887	Accessory Mount Kit Front 887 (for HB16/HB19)	1	
O1	SP-SP34-15MM-B	SP34 Carbon Seatpost 15 mm Offset	1	
O2	SP-SP34-ZERO-B	SP34 Carbon Seatpost 0 mm Offset	1	
P1	GR-HB19	HB19 Bolt Cover Kit (front and rear bolt covers)	1	X
P2	SK-HB19	HB19 Mounting Hardware Kit (M6 x 50 mm titanium fixing screws x3 and washers)	1	
P3	See Table E	HB19 Carbon One Piece Handlebar and Stem	1	
P4	HSS-S5G-KT	S5G Headset Spacer Kit (5 mm spacers x3, 7.5 mm spacers x2)	1	



E. HB19 CARBON ONE PIECE HANDLEBAR AND STEM*

Part No.	Stem Length	Handlebar Width
36 cm - HB19 Carbon One Piece Handlebar and Stem		
HB-HB19-80-36/40-B	80 mm	36 cm (40 cm at drops)
HB-HB19-90-36/40-B	90 mm	
HB-HB19-100-36/40-B	100 mm	
HB-HB19-110-36/40-B	110 mm	
HB-HB19-120-36/40-B	120 mm	
HB-HB19-130-36/40-B	130 mm	
HB-HB19-140-36/40-B	140 mm	
38 cm - HB19 Carbon One Piece Handlebar and Stem		
HB-HB19-90-38/42-B	90 mm	38 cm (42 cm at drops)
HB-HB19-100-38/42-B	100 mm	
HB-HB19-110-38/42-B	110 mm	
HB-HB19-120-38/42-B	120 mm	
HB-HB19-130-38/42-B	130 mm	
HB-HB19-140-38/42-B	140 mm	
HB-HB19-150-38/42-B	150 mm	
40 cm - HB19 Carbon One Piece Handlebar and Stem		
HB-HB19-100-40/44-B	100 mm	40 cm (44 cm at drops)
HB-HB19-110-40/44-B	110 mm	
HB-HB19-120-40/44-B	120 mm	
HB-HB19-130-40/44-B	130 mm	
HB-HB19-140-40/44-B	140 mm	



*7° flared drops



Frame Code: FM170
Serial Number Code: SN170
Frame Sizes (cm): 48/51/54/56/58/61

Build Compatibility:
Shimano Di2 12 speed-1x and 2x
SRAM eTap-1x and 2x

2026

F. SUGGESTED PREVENTATIVE MAINTENANCE SCHEDULE

Item	Every Ride	300 Miles	600 Miles	900 Miles	1200 Miles (Yearly)
Check bicycle for visual damage and function of all controls	X				
Check for firmware updates to electronics			X		X
Check brake function	X				
Check brake pad and rotor thickness, replace at manufacturer's recommended wear point		X	X	X	X
Bleed hydraulic brake system					X
Remove drivetrain, clean, degrease, reinstall with appropriate grease and lubricant					X
Inspect chain, cassette, and chainring for wear. Replace as per manufacturer's specification		X	X	X	X
Remove bottom bracket, inspect for wear, clean threads, and reinstall with proper grease and lubricant					X
Visual external inspection of mechanical shift housing and brake hose for wear, frayed, or cracked pieces	X				
Full inspection of mechanical shift cable and housing for normal wear and tear. Replace entire cable system when exhibiting signs of exploded housing ends, bent or frayed shift cables			X		X
Service headset- remove bearings, inspect for wear, replace bearings if worn, clean interface, and reinstall with appropriate grease					X
Clean and reapply grease/carbon paste/thread locker to stem, seatpost, and seatpost wedge hardware as per manufacturer's recommendation					X
Inspect spoke tension and wheel true- adjust as needed			X		X
Inspect wheel bearings and adjust/replace as needed			X		X
Check tire sealant level and replace if dry		X	X	X	X
Inspect tire casing and tread condition and replace when worn			X		X

RECOMMENDATIONS

1. It is Cervélo's strong recommendation to batch overlapping services together in a comprehensive way (e.g. service/replace headset bearings at time of brake bleeds, etc.)
2. In case of a conflict between the service intervals given in this tech reference sheet and those provided by a component manufacturer, consult with your Cervélo Retailer, Cervélo Customer Service, or the original component manufacturer for clarification.

