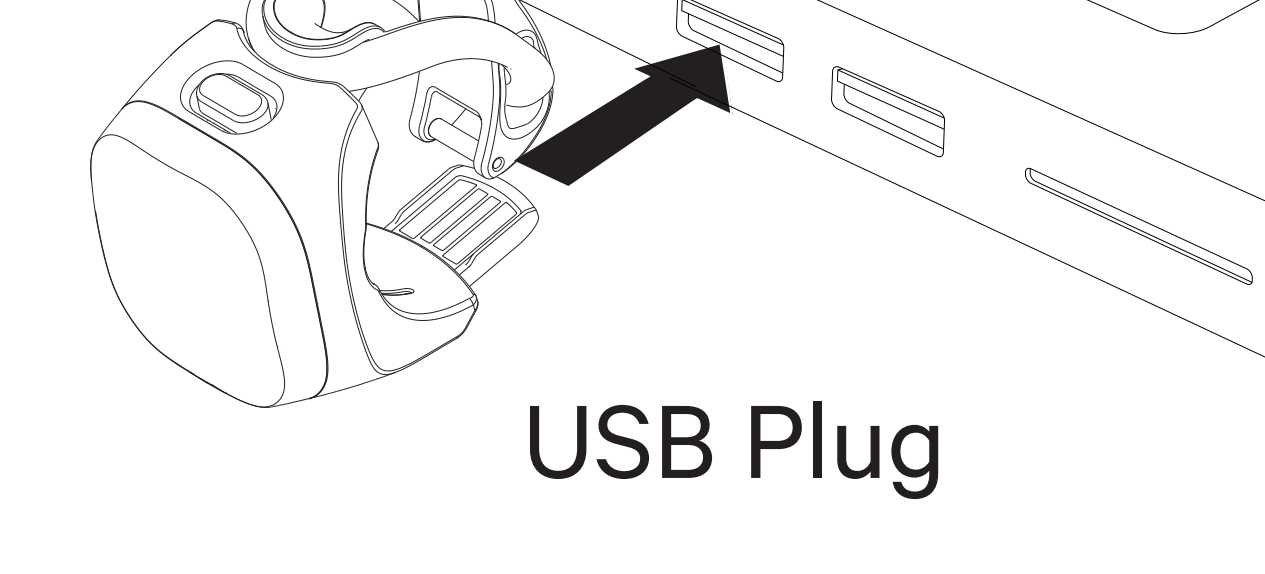
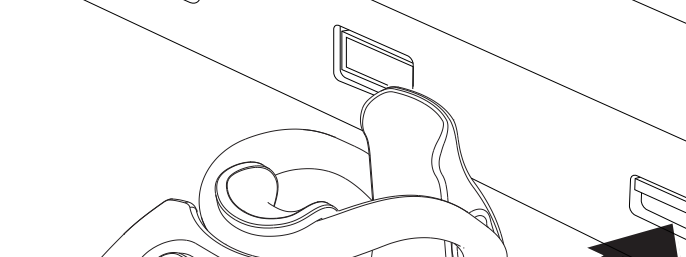




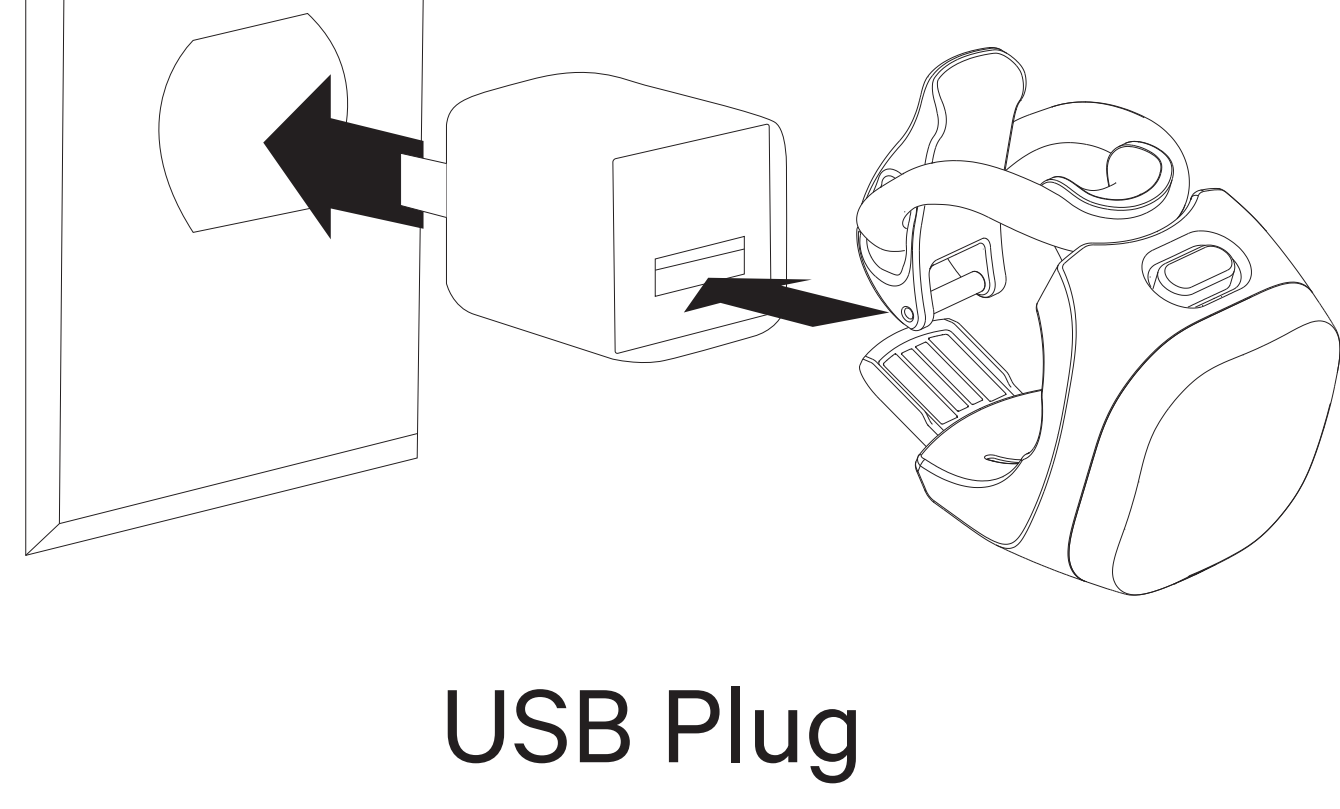
# BLINDER MINI

## QUICK START GUIDE

### RECHARGE BEFORE FIRST USE

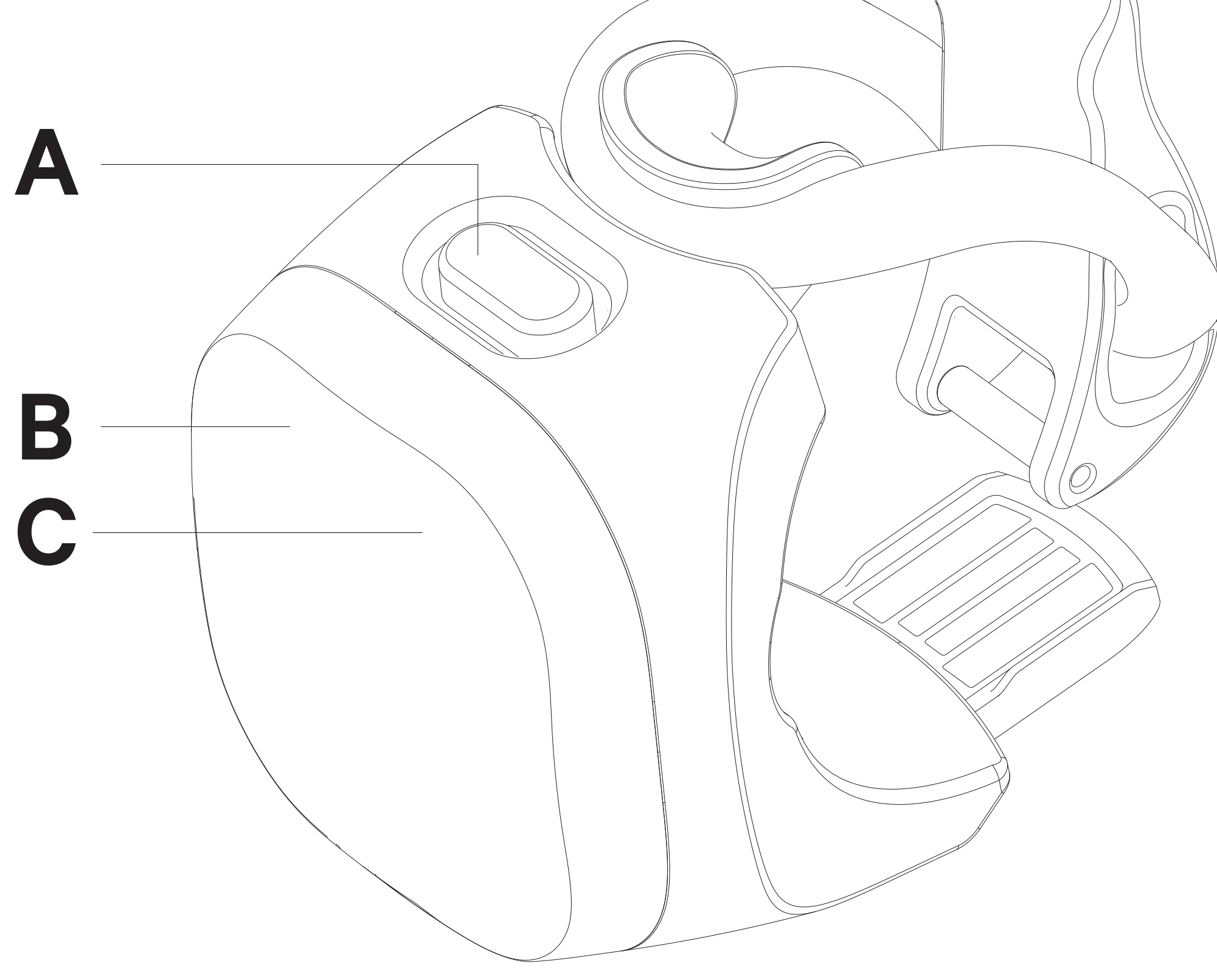


USB Plug



USB Plug

### INTERFACE



- A. Power / Mode switch
- B. Recharge Indicator
- C. Low Battery Indicator

Long press A to turn light on and off.  
Short press A to cycle between modes.

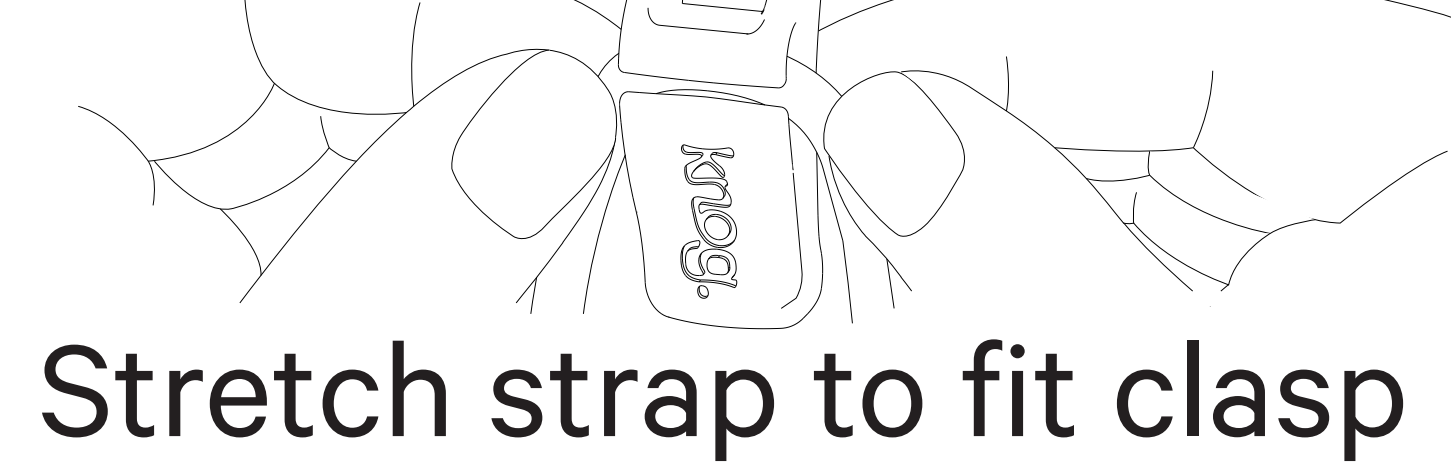
### FITMENT

#### 3 STRAP SIZES INCLUDED

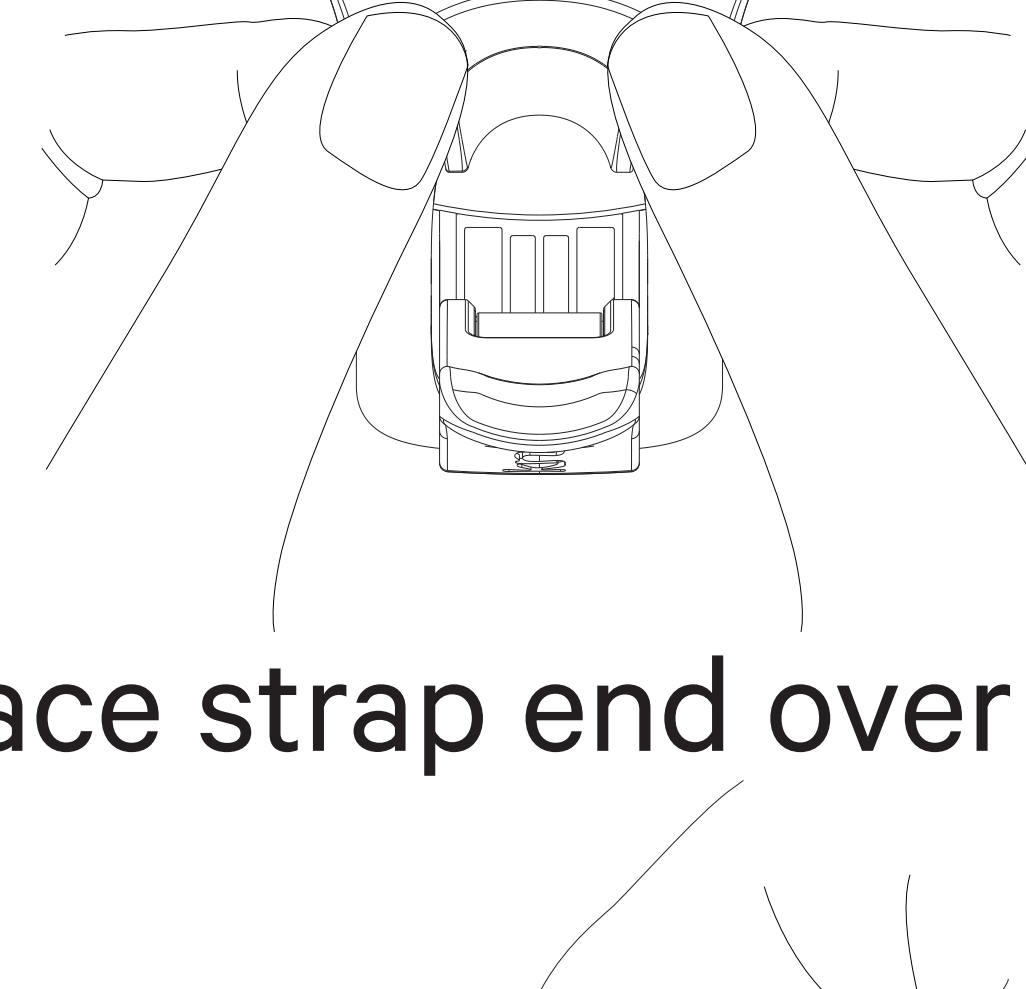


BLINDERS COME PRE-FITTED TO CLASP WITH MEDIUM STRAP

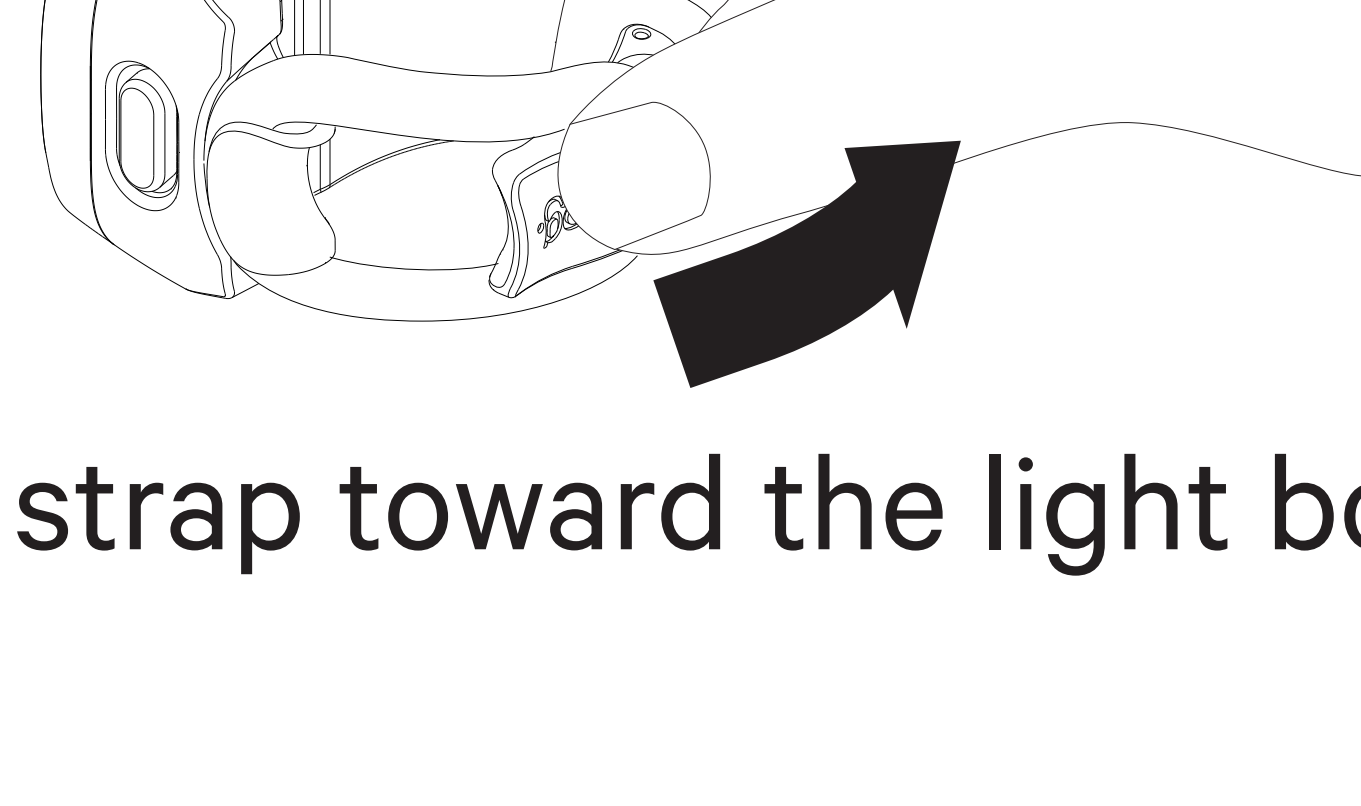
### INTERCHANGEABLE STRAP



Stretch strap to fit clasp

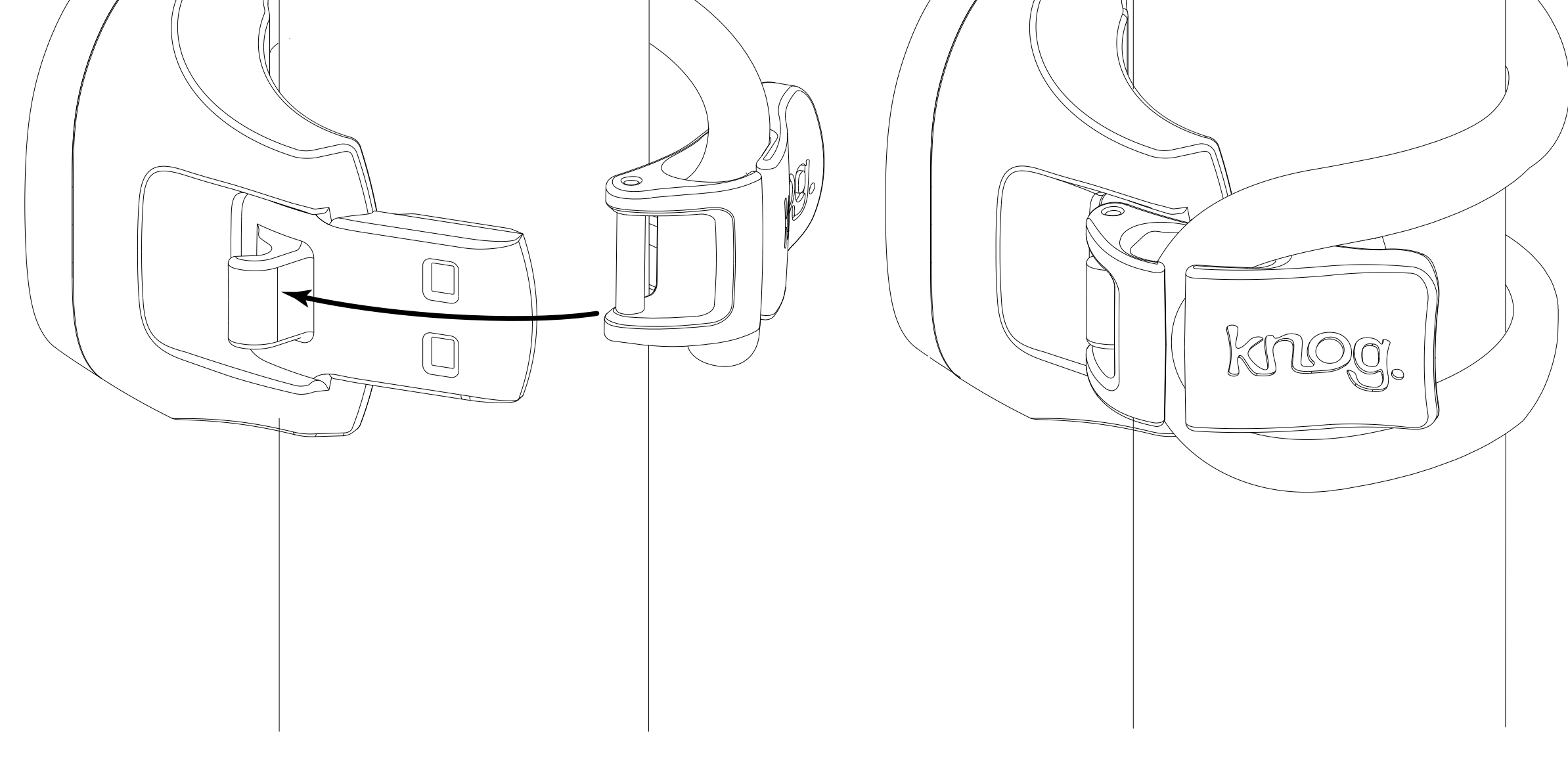


Place strap end over hook



Pull strap toward the light body

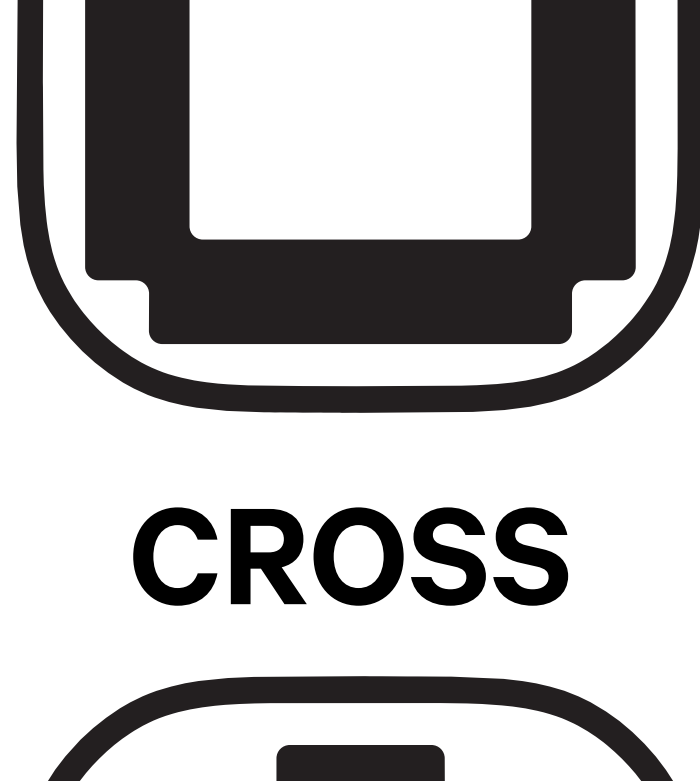
### MOUNTING



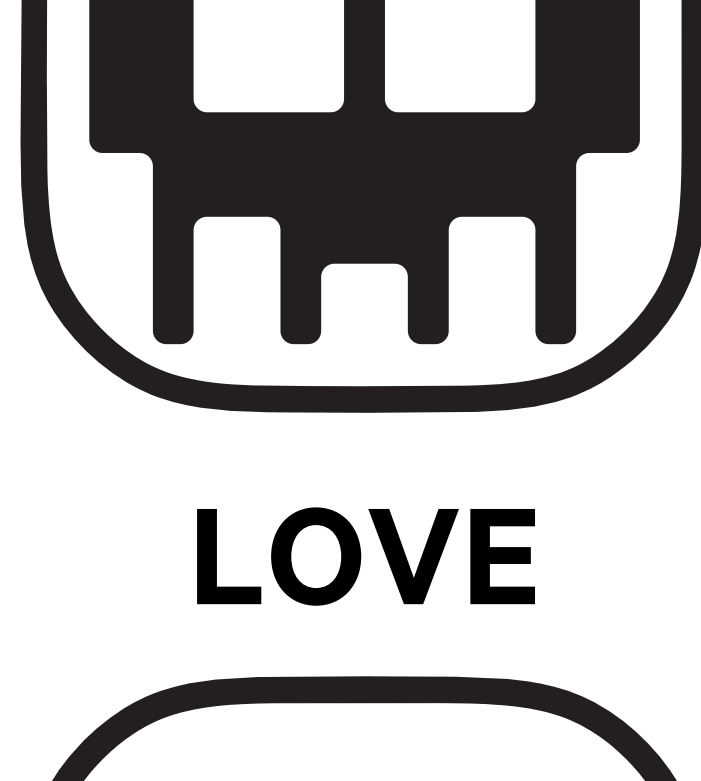
1. Pull silicone strap around bar
2. Engage latch into hook

### THE RANGE

#### SQUARE



#### SKULL



#### CROSS



#### LOVE



The Blinder Mini range is available in front and rear lights.

### WARRANTY INFORMATION

This light is guaranteed for 2 years against manufacturing defects only.

For more information go to

**KNOG.COM**